

### Viewings

Viewings by arrangement only.  
Call 0114 483 0038 to make an appointment.

### Vendors Comments

Add text here

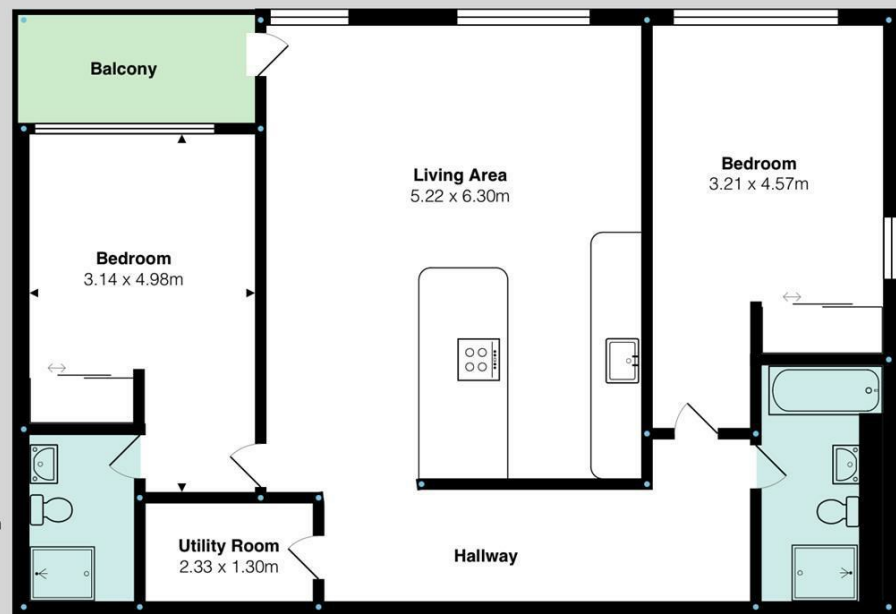
Energy Efficiency Rating		Current	Potential
Very energy efficient - lower running costs			
(92 plus) <b>A</b>			
(81-91) <b>B</b>		83	83
(69-80) <b>C</b>			
(55-68) <b>D</b>			
(39-54) <b>E</b>			
(21-38) <b>F</b>			
(1-20) <b>G</b>			
Not energy efficient - higher running costs			
<b>England &amp; Wales</b>		EU Directive 2002/91/EC	

# JC SALES & LETTINGS

Tel: 0114 483 0038  
E-mail: [sales@jc-salesandlettings.com](mailto:sales@jc-salesandlettings.com)  
Website: [www.jc-salesandlettings.com](http://www.jc-salesandlettings.com)



Apartment 601 Hallam Towers, 272A Fulwood Road, Sheffield, S10 3AZ



Total Area: 90.3 m<sup>2</sup> ... 972 ft<sup>2</sup> (excluding balcony)  
All measurements are approximate and for display purposes only



Apartment 601 Hallam Towers, 272a Fulwood Road, Sheffield, S10 3AZ

£1,850 Per month

- Balcony and incredible far reaching views
- Available furnished
- Full use of extensive on-site amenities
- Ideal for a single occupant, professional couple or small family
- EPC Grade B
- Available for August occupation
- Stunning, sixth floor apartment
- On-site fitness suite and swimming pool
- Early viewing is highly recommended

# Apartment 601 Hallam Towers, 272a Fulwood Road, Sheffield S10 2A7

AVAILABLE FOR AUGUST OCCUPATION is this STUNNING, sixth floor apartment with a BALCONY, which is available FURNISHED.

This two DOUBLE bedroom, two bathroom apartment benefits from INCREDIBLE, FAR REACHING VIEWS over Sheffield and has full use of the EXTENSIVE ON-SITE AMENITIES, which includes a state of the art FITNESS SUITE and SWIMMING POOL.

In brief the accommodation comprises: entrance hallway, utility room, large open plan living room / kitchen, two double bedrooms one with en-suite and a family bathroom / WC. One allocated car parking space.

An internal inspection is highly recommended to appreciate the size and standard of accommodation on offer!  
EPC Grade B.



Council Tax Band: C

